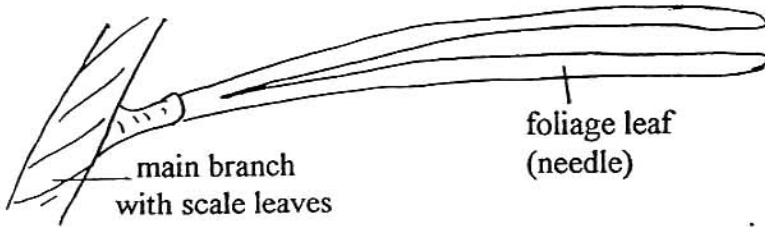


# *Pinus caribea* - The Caribbean Pine

## SPOROPHYTE GENERATION

This tree is found in several Caribbean islands. The pine tree with its cones is the sporophyte generation.

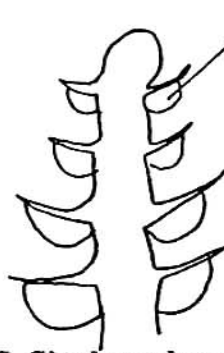
### the short shoot - a branch of limited growth



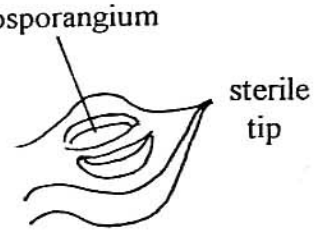
**a group of male strobili or cones**



**microspore**

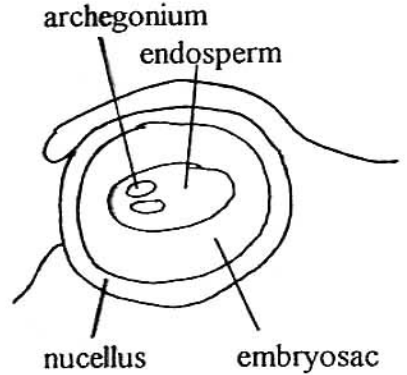
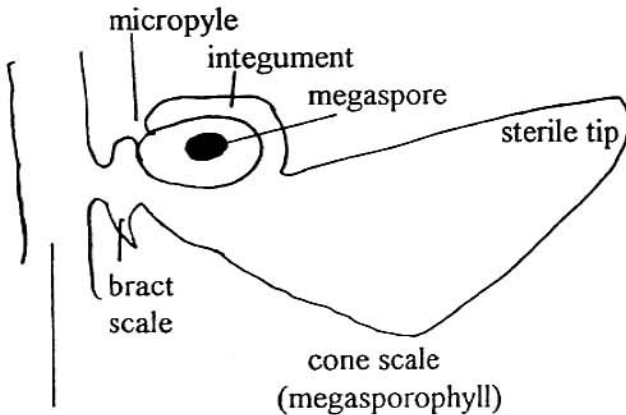


**L.S. Single male cone**



**microsporangium**

The female strobilus of megasporophylls which we commonly call the "cone" is thus one of two types produced by the sporophyte.



### **L.S. Part of female cone**

The mature seed is released from the megasporophyll together with a thin layer of papery tissue which was the upper surface of the megasporophyll. This tissue forms a wing, aiding in seed dispersal.

The microspores or pollen grains dispersed from the male cone are windborne. Within each pollen grain is a minute male gametophyte.