

“Enhancing Stewardship in Small-Scale Fisheries through Ecosystem Approaches and Other Means”
Too Big to Ignore Latin America and the Caribbean joint workshop with Working Group 4

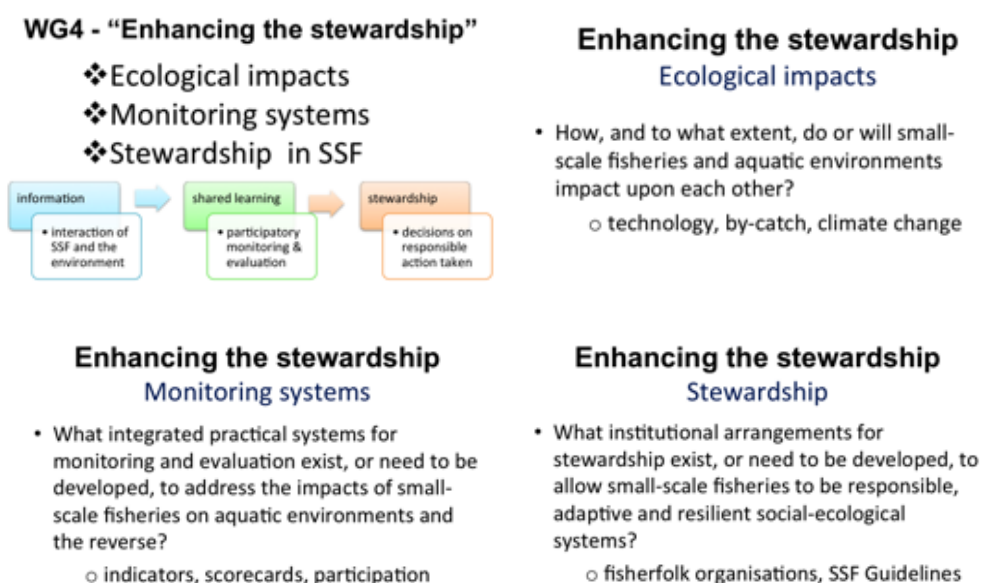
6-9 August 2013
Curitiba, Parana, Brazil

Background

Concerns about the oceans, and especially fisheries, have motivated people to work together in order to address the global “fisheries crisis.” Small-scale fisheries (SSF), and the uncertainties about how they affect or are affected by changes in ecological and social system dynamics, are among the key issues that require immediate attention.

Too Big to Ignore (TBTI) (<http://toobigtoignore.net/>) is a global research network and knowledge mobilization partnership on SSF. The main goal of TBTI is to enhance the understanding of the real contribution of small-scale fisheries to food security, nutrition, sustaining livelihoods, poverty alleviation, wealth generation and trade, as well as the impacts and implications of global change processes such as urbanization, globalization, migration, climate change, aquaculture, and communication technology on small-scale fisheries. TBTI is also concerned with the lack of understanding about both the impacts of SSF on ecosystem and the contribution of SSF to stewardship and conservation.

TBTI is organized around regional issues and thematic research conducted by working groups (WG). For Latin America and the Caribbean (LAC), one of the key themes that TBTI aims to address in the first phase of the project is related to “Enhancing the Stewardship,” which is the focus of WG4. WG4 has three main components each associated with a guiding question:



Objectives

The workshop is organized to facilitate dialogue among people in LAC who are interested in discussing issues concerning SSF in the region. While other topics will be covered, the workshop will have specific focus on the project goals related to WG4. The workshop objectives are:

1. To introduce participants to the research and practical aspects of TBTI WG4 and LAC;
2. To engage fisheries researchers and others actively interested in SSF in a discussion about tools, methods and good practices used to assess and monitor SSF impacts, and to enhance stewardship;
3. To enhance SSF research collaboration and networking in Brazil and elsewhere in the LAC region; .
4. To discuss other aspects of research on SSF in the LAC region.

Main outputs

A major output of the workshop is expected to be a networked program for TBTI that enhances existing and planned compatible SSF initiatives in Brazil, and generally the LAC region. The discussion that participants have on SSF issues in the region along with the ways to address them may form the basis for publications on the LAC region and WG4 topics. Regional collaboration will be enhanced through this workshop.

Participants

The workshop is open to everyone interested in SSF in LAC. We encourage participation of TBTI members and partners in the region, researchers and others from agencies or networks addressing SSF in LAC and WG4 topics, fisheries managers and fisherfolk leaders involved in decision making arenas in LAC SSF, and graduate students, in LAC and elsewhere, whose thesis topics are related to LAC and WG4.

If you are interested in attending the workshop, please complete the attached registration form and send it as an email attachment to toobigtoignore@mun.ca. Note that financial support to facilitate participation of interested people at the workshop is limited. Partial funding may be possible to TBTI members, as well as non-TBTI members involved in aspects of SSF that are most relevant to LAC and WG4. Special consideration may be given to those who are able to secure financial support from other sources and only require supplementary fund from the organisers.

People who are interested in the workshop and TBTI activities, but are not able to attend the workshop, will be added to a list for future communication and engagement.

The workshop will be conducted mainly in English, and when necessary in Portuguese, and to lesser extent, Spanish.

Programme (provisional)

Tue 6 Aug	Activity
08:30 – 09:00	Registration and distribution of workshop documents
09:00 – 10:30	Opening Session Don't miss the boat: Small-scale fisheries (SSF) and the need to work together <ul style="list-style-type: none">• Welcome remarks• Introduction and objectives• Overview of TBTI• Overview of SSF in LAC• Overview of TBTI WG 4• Some Brazilian perspectives on TBTI• Questions for clarification and expectations (participants)

Tue 6 Aug	Activity
10:30 – 11:00	Coffee break
11:00 – 12:30	<p>Let’s talk about it</p> <ul style="list-style-type: none"> • First impressions, potential and real connections – people, projects, institutions, networks – how to meet objectives and expectations
12:30 – 13:30	Lunch
13:30 – 15:00	<p>Panel session 1:</p> <p>Living the change in ecosystems and fisheries (SSF)</p> <ul style="list-style-type: none"> • Introduction of the topic • Social-ecological system concepts and issues • Experience from LAC
15:00 - 15:30	Coffee break (flexible timing)
15:30 – 17:00	<ul style="list-style-type: none"> • Experience from Brazil <p>Let’s talk about it</p> <ul style="list-style-type: none"> • How fisheries are changing ecosystems, and how ecosystems are changing fisheries ... Who or what is causing change or being impacted by change? Which of the impacts are negative or positive? Why? Do the impacts change over time? How?
19:00	“Fishing for caipirinhas”: exploring ideas and opportunities to work together

Wed 7 Aug	Activity
07:00 – 08:30	Bus trip and breakfast on the road from Curitiba to Matinhos
08:30 – 09:00	Reflections on Day One and burning issues
09:00 – 10:30	<p>Panel session 2:</p> <p>Monitoring the change: strategies and methodologies to assess and to monitor the change</p> <ul style="list-style-type: none"> • Introduction of the topic • SocMon and other methods for monitoring SSF • LAC experience with monitoring in SSF • Brazilian experience with monitoring in SSF • <p>Let’s talk about it</p> <ul style="list-style-type: none"> • What do we know about measuring change? How can we learn together by participatory monitoring and evaluation (PM&E)?
10:30 – 11:00	Coffee break

Wed 7 Aug	Activity
11:00 – 12:30	<p>Panel session 3: Enhancing the stewardship: sharing and learning by experiences</p> <ul style="list-style-type: none"> • Introduction of the topic • Why stewardship and how? • Experience from LAC • Experience from Brazil <p>Let's talk about it</p> <ul style="list-style-type: none"> • How are fisherfolk organizing and collective action enhancing stewardship? What would help to improve stewardship?
12:30 – 13:30	Lunch
13:30 – 16:30	<p>Field trip: Pulling it all together and experiencing the stewardship</p> <ul style="list-style-type: none"> • Interaction with Matinhos fisheries and fisherfolk while discussing interdisciplinary and transdisciplinary approaches from identifying, monitoring and evaluating impacts, to enhancing the stewardship through networks, organizations and collective action
16:30 – 18:00	Bus trip from Matinhos to Curitiba with informal review of learning

Thu 8 Aug	Activity
08:30 – 09:00	Reflections on Day Two and burning issues
09:00 – 10:30	<p>Discussion Forum</p> <p>Riding the WG 4 wave: planning strategies for WG4</p> <ul style="list-style-type: none"> • Outline work plan for WG4 in the LAC region • Participant small groups develop WG4 plans (all 3 components) for Brazil/LAC
10:30 – 11:00	Coffee break
11:00 – 12:30	<p>Discussion Forum</p> <p>Final session focused on WG4: Let's move together</p> <ul style="list-style-type: none"> • Participants present the draft plans and discussion follows on how to integrate the plans with each other and with other initiatives • Decisions on leadership, responsibilities, communication, timelines and mobilization of resources to move towards implementation
12:30 – 13:30	Lunch
13:30 – 15:00	<p>Who's doing what, what has been done, and what's next for SSF research in LAC</p> <ul style="list-style-type: none"> • Speed presentations (5-min) from participants about their research • Brainstorming and discussion about key issues that need research and the kind of research that need to take place in order to address them
15:00 – 15:30	Coffee break (flexible timing)
15:30 – 16:30	<p>Fishing for solutions: definitions and meanings of SSF and EAF</p> <ul style="list-style-type: none"> • Presentation 1. Conflicting definitions of SSF in the LAC region: problems for monitoring <ul style="list-style-type: none"> ◦ Discussion on how to find a common ground – on definitions for monitoring and official statistics • Presentation 2. What an “ecosystem approach to SSF” really means? • Open discussion

16:30 – 18:00	LAC: Putting together our capacities for building knowledge <ul style="list-style-type: none"> • Panel presentation: Reflection and feedback from partners and collaborators • Open discussion

Fri 9 Aug	Activity
09:00 – 10:30	LAC: Planning actions <ul style="list-style-type: none"> • Planning strategies, in coordination with WG4, including products, communications, timelines and mobilization of resources to move forward and implementation • Working plan for students applications – criteria of selection • Contribution of LAC members to the 2nd World Small-Scale Fisheries Congress
10:30 – 11:00	Coffee break
11:00 – 12:30	LAC and WG4 integrating and closing: Let's move together <ul style="list-style-type: none"> • Determine the key areas for integration and networking among regions, groups, participants and others • Closing remarks
12:30 – 13:30	Lunch and departures

Contacts

WG4 organiser in Brazil and workshop logistics	LAC region coordinator in Brazil
Rodrigo Medeiros Universidade Federal do Paraná (UFPR) Email: verdesfilmes@gmail.com	Mary Gasalla Universidade de São Paulo (USP) Email: mgasalla@usp.br

Workshop organisers

Patrick McConney, The University of the West Indies, (UWI), Cave Hill Campus, Barbados

Rodrigo Medeiros, Universidade Federal do Paraná (UFPR), Brazil

Mary Gasalla, Universidade de São Paulo (USP), Brazil

Silvia Salas, Unidad Mérida del Centro de Investigación y de Estudios Avanzados (CINVESTAV), Mexico

Ratana Chuenpagdee, Memorial University of Newfoundland (MUN), Canada

The workshop is supported by Too Big to Ignore Partnership through funding from the Social Sciences and Humanities Research Council of Canada and Universidade Federal do Paraná